

PARK AVE

MELBOURNE

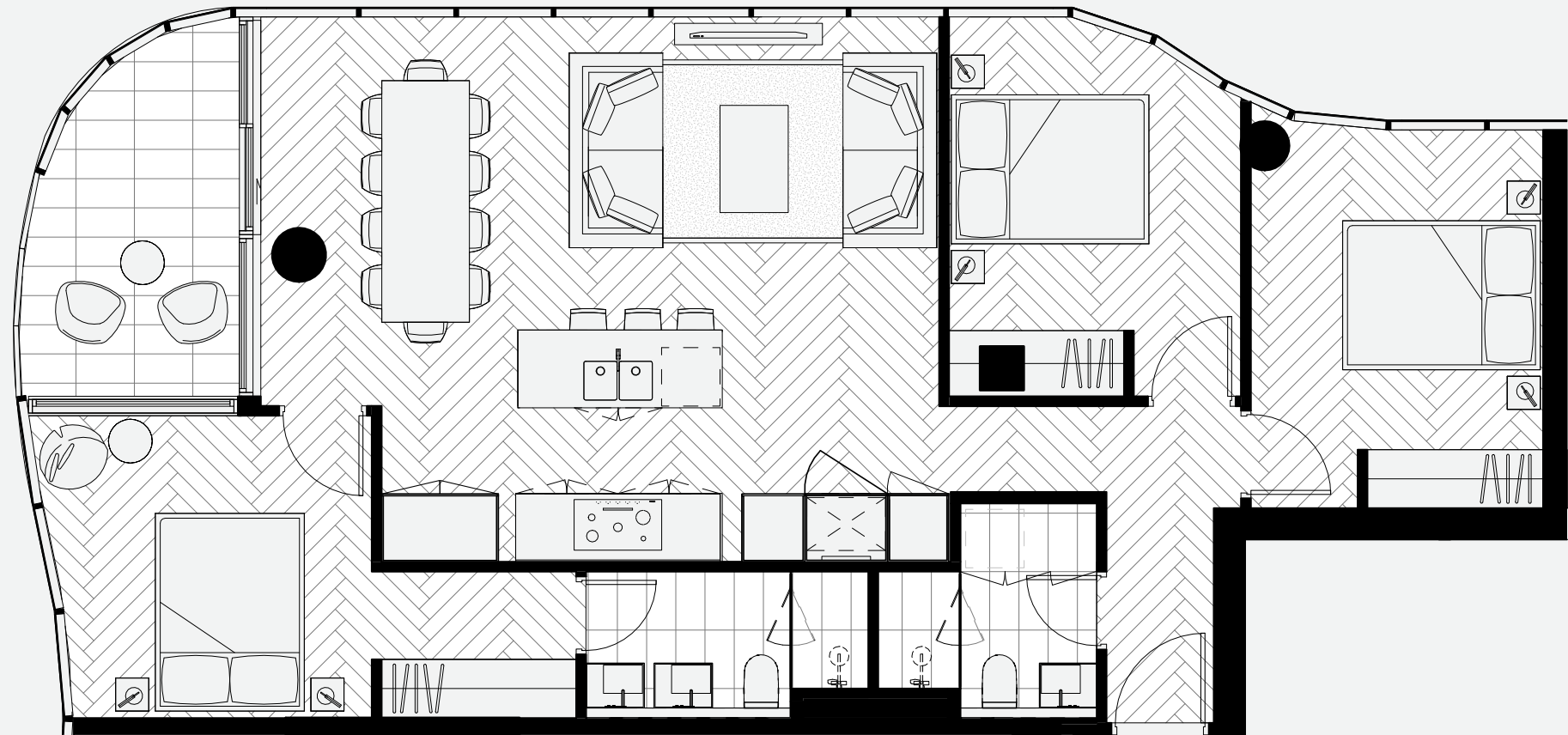
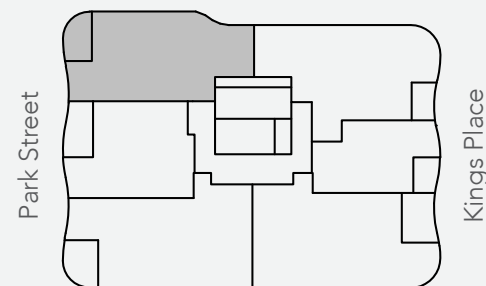
3 Bedroom, 2 Bathroom,
2 Car park

SIZE

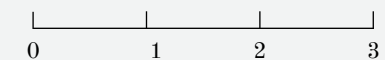
Internal.....95.5 m²
External.....8.1 m²
Total area.....103.6 m²

APARTMENTS

18.06, 19.06



Disclaimer: The particulars are set out as a general outline for the guidance of intending purchasers and do not constitute an offer or contract. All descriptions, dimensions, references to conditions and necessary permutations for use and other details are given in good faith and are believed to be correct, but any intending purchasers should not rely on them as statements or representations of fact, but must satisfy themselves by inspection or otherwise to the correctness of each item, and where necessary seek advice. No third party supplier or their agent has any authority to make or give any representations or warranty in relation to this property. Areas are calculated based on the Property Council of Australia Method of Measurement for Residential Property. Window sizes, louvres and locations may be subject to change.



SCALE: 1:200



NORTH